



Sustainability Policy and Environmental Action Plan
dated February 27, 2024

Sustainability Policy

Pylon Public Company Limited (“the Company”) recognizes the importance of responsible business operations and acknowledges all stakeholders throughout the value chain. It is committed to developing its business to grow sustainably, considering economic, social, and environmental dimensions, as well as transparency, participation, and continuous development. Furthermore, the Company ensures compliance with good governance and its business code of conduct. Therefore, the Company has announced its corporate sustainability policy to cover current and future business activities, as follows:

Corporate Governance and Economy

1. The Company complies with ethical business guidelines and practices, best practices for performance of duties, as well as relevant corporate policies, regulations, announcements, orders, and enforced notices, while ensuring regular reviews.
2. The Company focuses on developing short-term and long-term business growth strategies, taking into account internal and external risks, while prioritizing the optimization of supply chain management to enhance the Company's competitiveness in the construction industry.
3. The Company conducts business with integrity, transparency, accountability, and good corporate governance principles by focusing on combating corruption and adhering to the morality and ethics of management.
4. The Company effectively conducts business to continuously satisfy customers and partners.
5. The Company conducts business while considering its impact on stakeholders and establishing guidelines to mitigate any adverse effects.

6. The Company is committed to developing innovation and technology to enhance business capabilities and efficiency.

Environmental Management

1. The Company strictly complies with environmental laws related to its work and maintains the environment throughout its business process.
2. The Company aims to bring clean energy into doing business to reduce pollution emissions and save energy.
3. The Company considers the environment at all stages of doing business.
4. The Company is striving to improve its energy usage efficiency through its entire work process.
5. The Company implements waste management to maximize the recycling of waste materials.
6. The Company aims to prepare Carbon Footprint for Organization (CFO), looking at the Company's greenhouse gas emissions trends, and determine the best possible reduction guidelines.
7. The Company educates employees at all levels within the organization and cultivates their consciousness about environmental responsibility.

Society

1. The Company conducts its business with social responsibility, striving for maximized operational efficiency while fostering harmonious and joyful coexistence within the community surrounding its projects.

2. The Company prioritizes respect for human rights, adheres to the rule of law, and neither commits nor supports human rights violations.
3. The Company promotes an occupational safety and health management system aligned with international standards, while proactively taking actions to prevent occupational accidents.
4. The Company focuses on maintaining employees, developing their capacity, and strengthening human capital capabilities to accommodate the Company's strategies in various fields.
5. The Company conducts fair employment of employees, having no illegal labor or child labor issues.
6. The Company takes into account social and community values by focusing on engaging in development initiatives that benefit society and the local community, as well as supporting social creative activities.
7. The Company collaborates with educational institutions as well as public and private agencies to acquire and share knowledge for business development and sustainable education.

All directors, executives, and employees of Pylon Public Company Limited are responsible for supporting, driving, and performing duties in accordance with the Company's sustainability management policy and framework. Additionally, the Company has established a working committee and provided employees and executives with training and development in ESG knowledge, supported by the Stock Exchange of Thailand and other institutions, to advance ESG integration into the work process. In light of the above, ESG principles have already been integrated into the Company's operations.

Environmental Action Plan

Environmental Impact Prevention and Resolution Measures

Table of Contents

	Page
1 Environmental Action Plan: Environmental Impact Resolution Measures	6
2 Air Quality Action Plan	7
3 Noise Level Action Plan	12
3 Surface Water and Sewage Quality Action Plan	13
4 Drainage and Flood Prevention Action Plan	14
5 Transportation Action Plan	16
6 Waste Management Action Plan	18
7 Action Plan to Mitigate Impact on Neighboring Buildings	19
8 Health and Public Health Action Plan	20

Environmental Action Plan

Environmental Impact Prevention and Resolution Measures

Pylon Public Company Limited has set up an environmental action plan to guide the implementation of all work processes. The environmental action plan covers action plans on eight matters as follows:

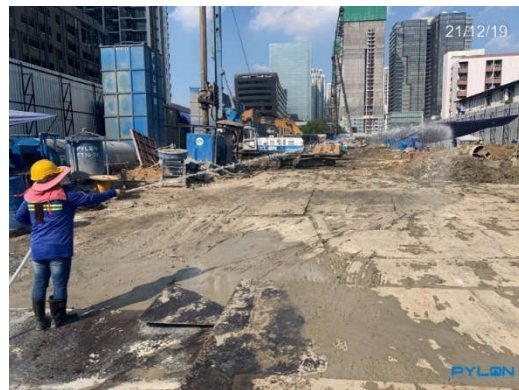
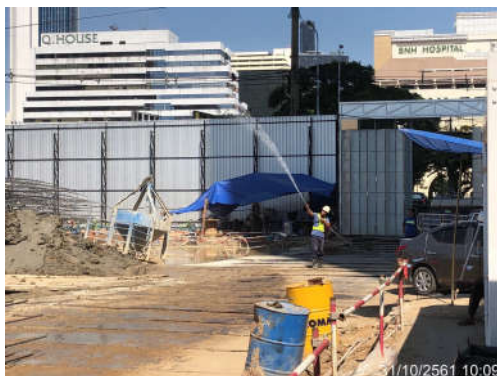
- 1) Air Quality Action Plan
- 2) Noise Level Action Plan
- 3) Surface Water Quality and Sewage Quality Action Plan
- 4) Drainage and Flood Prevention Action Plan
- 5) Transportation Action Plan
- 6) Waste Management Action Plan
- 7) Action Plan to Mitigate Impact on Nearby Buildings
- 8) Health and Public Health Action Plan

1. Air Quality Action Plan

1.1 Construction material trucks must have canvas or trailer cover material along the transport route to prevent the dispersal and fall of construction material into the environment. Additionally, the engines of all vehicles parked in the construction area must be turned off.



1.2 Spray water on the construction area or the activity area affected by construction dust dispersal at least twice a day (morning and afternoon) and during dry weather, or as appropriate to the climate. Ensure that the soil surface is kept wet to prevent dust dispersal and minimize the impact on neighboring communities.



1.3 Limit the speed of transportation within the construction area to not more than 25 km/hr. Additionally, ensure that the speed limit outside the project area complies with legal requirements.



1.4 Provide workers to clean the road surface in front of the project area after the entry and exit of trucks, and ensure that truck wheels are washed before leaving the project area each time, to prevent debris from soiling public roads. If any items fall onto the traffic zone or shoulder, they must be promptly removed, or coordination should be made with area owners to take appropriate action in accordance with relevant laws.



1.5 Monitor the operation and maintenance of machinery and vehicles used in construction to remain in good condition and to minimize emissions resulting from incomplete engine combustion.



1.6 Do not burn scraps of materials or solid waste in the construction area.

1.7 Construct a fence or dustproof panel around the construction area to prevent and reduce the dispersion of dust outside of the construction site.



1.8 Install a sign displaying at least the name of the project owner, the project name, project details, construction plan, and duration of operation. Ensure the sign is prominently placed in the project area and easily visible at all times during construction.



1.9 Control the opening and use of the operational site as needed.



1.10 Keep the construction materials orderly in the storage area, and ensure that any part that could cause dust dispersion is covered.



1.11 If there are public complaints about air quality impacts from construction activities, the project must be promptly reviewed and adjusted.



2. Noise Level Action Plan

2.1 A project fence shall be constructed to provide some level of protection and reduction of noise levels resulting from the construction process.



2.2 Construction procedures involving noisy machinery must be restricted to daylight hours. In cases where construction is necessary outside of those hours, non-noisy activities should be prioritized to minimize potential noise disturbances. For continuous activities, neighboring buildings must be notified in advance of the operations.

2.3 Noisy construction machinery and equipment require regular inspection and maintenance, including the use of adequate lubricants and tightening of parts to reduce vibration and noise levels.

2.4 Soundproofing equipment, such as earplugs or earmuffs, is provided to construction workers who have to work in areas with noise levels exceeding 85 dB(A). The use of soundproofing equipment is mandatory whenever they work in such areas.

2.5 Ensure that the Company's workers and subcontractors adhere to strict noise reduction measures.

2.6 Notify the community of noisy construction plans

2.7 Arrange for project officers to make periodic visits throughout the construction phase, at least once a month, to gather and listen to feedback from nearby communities regarding the noise impacts of the project construction activities. This feedback will help in finding ways to mitigate potential noise effects.

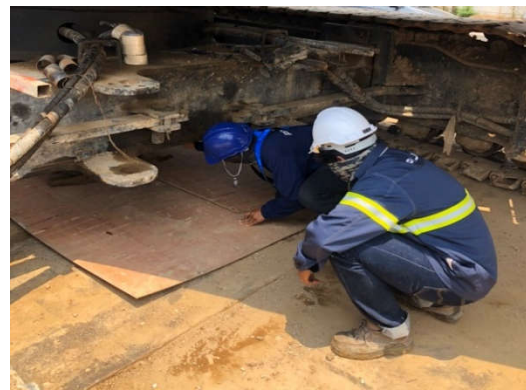


3. Surface Water Quality and Sewage Quality Action Plan

3.1 Provide sanitary toilets for workers.



3.2 Regularly monitor engine conditions used in construction activities to prevent oil contamination to surface water sources.



3.3 Do not dispose of garbage or scraps of building materials into drainage pipes or public troughs.

3.4 Do not allow piles of soil or construction scrap materials to accumulate along the drainage rails or near water sources to prevent sediment from being washed into the water source.

3.5 Provide equipment and absorbent materials, such as sawdust, scraps of cloth, sand, etc., for cleaning up small amounts of lubricant or fuel spills.

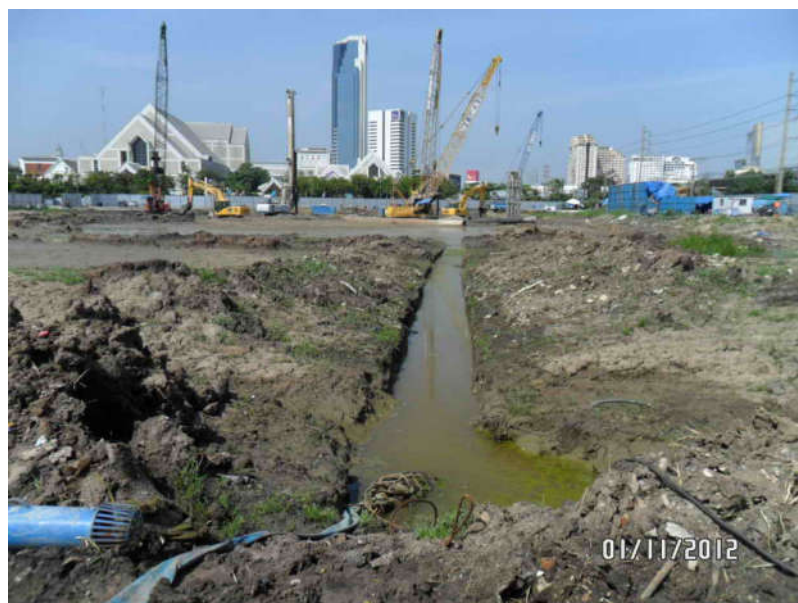
4. Drainage and Flood Prevention Action Plan

4.1 Provide temporary drainage troughs within the construction area and ensure that the drainage troughs are maintained to prevent clogging or sludge accumulation, thereby ensuring efficient drainage in the area.

4.2 Maintain cleanliness by sweeping materials in the construction area that may be washed into the drainage gutter by rainwater.

4.3 If sludge or construction scraps enter the drainage rail, immediately remove the soil and scraps.

4.4 Do not discard garbage or scraps of building materials into the drainage gutter.



5. Transportation Action Plan

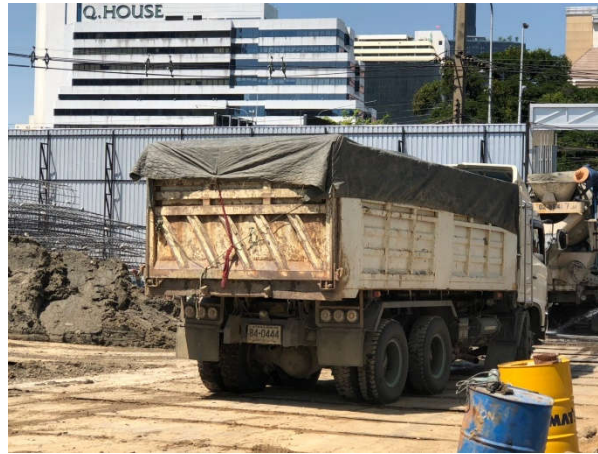
5.1 Train drivers responsible for transporting materials, equipment, and machinery for project installation, as well as shuttle drivers carrying construction workers, to strictly adhere to traffic rules.



5.2 Limit the speed within the construction area and inside the concrete mixing plant area (Batching Plant) to not more than 25 km/hr. Additionally, ensure that the speed outside the construction area complies with the required laws.



5.3 Cover the cargo area to prevent falling during transport.



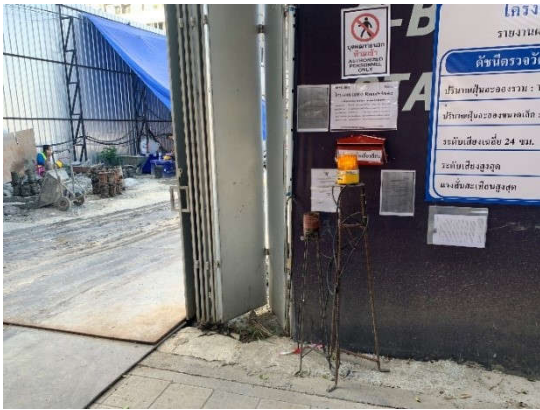
5.4 Tires of transport vehicles leaving the construction area must be washed each time to prevent debris, sand, and dirt from being deposited on public roads.



5.5 Coordinate with relevant agencies to obtain the construction plan and request cooperation in organizing traffic facilitators. In the case of large-scale transportation of machinery, coordinate with these agencies before moving.

5.6 Provide visible signs or alarms both day and night, at least 100 meters before reaching the construction area.

5.7 Provide access to the construction area and establish separate traffic routes from the entrance-exit areas. Ensure convenience and supervision for all types of vehicles entering the project area.



5.8 In case the traffic route is damaged due to construction activity, repairs must be conducted immediately by the relevant party under the project.

6. Waste Management Action Plan

6.1 Provide adequate space and containers to accommodate the waste generated by construction workers and construction scraps.

6.2 Monitor and ensure that waste generated by construction workers and construction waste are not disposed of in areas outside the project's designated area.

6.3 Arrange for workers responsible for collecting waste and construction debris from the construction site to place them in the designated area for the project.

6.4 Do not dispose of solid waste in drainage troughs, sewage pipes, or water sources nearby the construction site.



7. Action Plan to Mitigate Impact on Neighboring Buildings

7.1 Survey the neighboring buildings before commencing the construction project.

7.2 Establish positive relationships and coordinate with community leaders in neighboring areas, engaging in mass activities and public outreach to foster mutual understanding and address issues together.

7.3 Arrange for staff to coordinate with neighboring areas.

7.4 Regulate construction activities and the behavior of construction workers to prevent adverse impacts on neighboring communities.

7.5 Provide temporary worker accommodations and construction space with clearly defined boundaries, ensuring they are not located in environmentally sensitive areas or community areas that may disturb neighboring residents.



8. Health and Public Health Action Plan

8.1 Provide construction workers with clean drinking water facilities, suitable rest areas, and adequately sanitized toilets.



8.2 Collect and dispose of waste generated by appropriate means to prevent the breeding of vectors



8.3 Coordinate with local hospitals to provide accommodation and facilitate the transfer of those injured during construction projects in the event of emergencies.

8.4 Provide basic first aid equipment at the temporary construction office of the project.

